



sage

The Sage Network

All in one place

Software • Savings • Support

Why the Network?

Control

The Network is easy and flexible giving you complete control over your package and allowing you to adapt it whenever you need to.

Discounts

As a member, you qualify for a 20% discount off software and training, which you can also pass onto your clients.

Customer Service

Expert support and dedicated account managers to guide you through any issues. You can also view webinars and read articles from industry experts.

Choice

Choose from online or desktop bundles and then add optional support and additional clients.

**Hand-pick what's
right for you.**

Select your bundle...



Online Bundle

Select the Online Bundle and receive **Sage One Accountants Edition** - a cloud based accounting solution for any small business.

Also includes:

- 24/7 online support
- Auto updates
- Commission for client sign ups
- 50 x Cashbook free for life



Accountants Bundle

Select the Accountants Bundle and receive **Sage One Accountants Edition** plus **Sage 50 Accounts** and **Sage 50 Payroll** (in-house & demo use). A combined accounting solution for your practice.

Also includes:

- Expert telephone support for you & your clients
- Marketing & sales materials
- 20% commission
- Access to incentives through Sage Rewards



Bookkeepers Bundle

Select the Bookkeepers Bundle and receive **Sage One Accountants Edition** plus **Sage 50 Accounts** and **Sage 50 Payroll** (in house & demo use). The perfect bookkeeping solution.

Also includes:

- Expert telephone support
- 20% commission
- Access to incentives through Sage Rewards

**Choose your
add-ons...**

Sage 50 Accounts: Client Manager

Client Manager is designed exclusively for accountants in practice. The multi-user, multi-company software improves practice and client integration.

- Multi- user & Multi- company
- Sage Drive
- Compatible with Sage 50 Essentials & 50 Accounts
- Integration with Sage Accounts Production

Sage 50 Payroll Bureau

Sage 50 Payroll Bureau is designed to help you process payroll tasks simultaneously across all clients and make Auto Enrolment legislation as simple as possible.

- From 5 clients upwards
- Technical support
- Automatic updates
- Auto Enrolment compliant

Sage 50 Pensions Module

Why not make Auto Enrolment even easier with our Pensions Module - the quickest way to get you and your clients Auto Enrolment compliant.

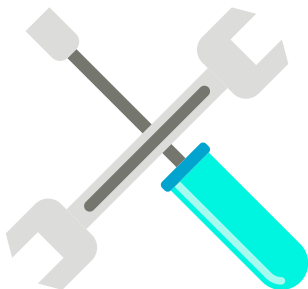
- Automatically assess your clients' workforce
- Automatically manage pensions data and payments
- Automate mandatory employee communications in accordance with legislation



Premium Support

Add Premium Support and get added piece of mind for your practice:

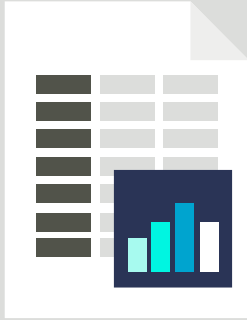
- Priority telephone support
- Support for you and your clients
- Extended lines 8am-6pm
- 30 second call response
- One hour email response



Data Repair

With Data Repair if your data becomes lost or corrupt our team can help you fix it:

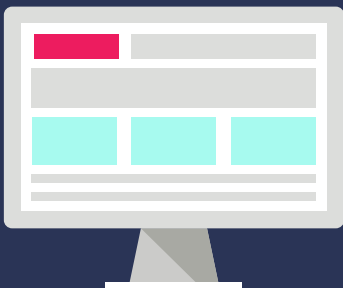
- Support for Sage data
- Support for your own practice data
- Support for client data that you are solely responsible for
- One week turnaround



Excel Support

Most customers only use around 20% of Excel, let us help you unlock the remaining 80% by adding Excel support:

- Expert telephone support
- Amend and fix spreadsheets
- Organise data lists into reports
- Create pivot tables, charts and graphs
- Create and amend macros

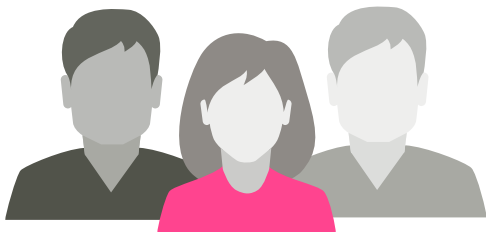


Report Designer

Include Report Designer and our dedicated team will produce reports tailored to your business needs.

For example:

- Departmental Monthly Profit & Loss
- Departmental Budgets versus Actuals
- Departmental Balance Sheet



HR Advice

Our HR professional services give your practice and clients all the advice and support you need to deal with HR issues.

- 6 licenses (1 for you & 5 for your clients)
- 10 years average experience
- Easy traceable history via Incident management and compliance trail
- Legally reliable with Incident compensation indemnity cover



Construction Industry Software (CIS)

Accurate Construction Industry Software management available anywhere at any time. Speed-up monthly processing & take the stress out of subcontractor tax.

- Calculate your deductions accurately
- Produce tax returns & submit to HMRC online
- Verify new subcontractors more quickly
- Capture all your CIS tax details



Accountant Partner

**Join the Accountant Partner Programme
and become part of an exclusive group of
accountants.**

You'll also gain access to range of added benefits:

- Dedicated account manager who will understand your practice
- Bespoke marketing materials for you and your clients
- Sales toolkit including version comparisons, lead-packs and product videos
- Pricing tool for Sage software
- Accountant Partner Certification
- Up to 40% commission
- More incentives through Sage Rewards

For more information
about the Network

Call: 0845 111 1111

www.sage.co.uk/accountants/network